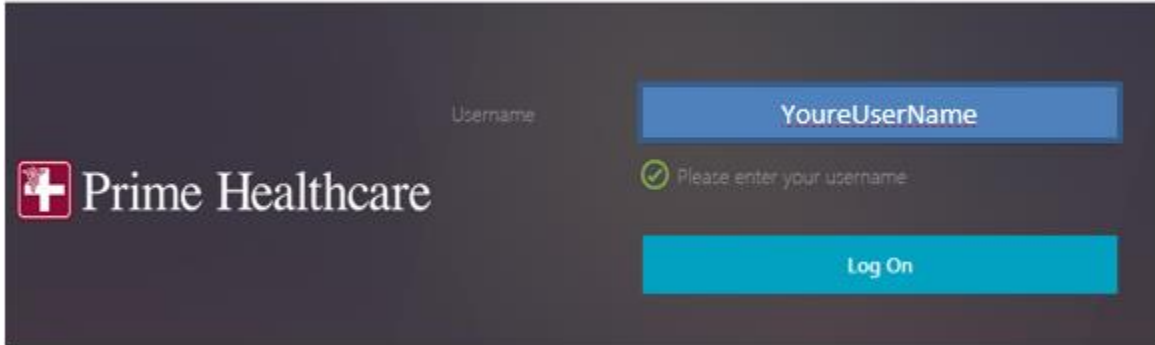


Remote Access User Instructions – Citrix

1. In Internet Explorer web browser, go to <https://gateway.primehealthcare.com/> (For outside office use) or <https://apps.primehealthcare.com> (For on premise use).
2. Enter your Prime username and password. (Do not add the @psi.us to the username)



3. Click on APPS located at the top



4. Select the Mission Meditech Application from the list named "Meditech360 – MRTX Live".



Details

MEDITECH 360 - MRTX Live
MediTech

You may be prompted to open a URL link. If so, select "Open URL:"

Open URL:Citrix Receiver?

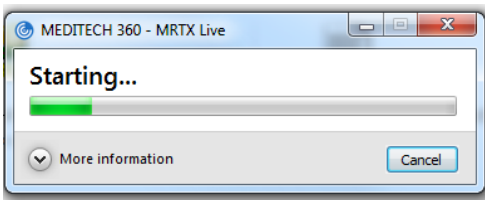
Always open these types of links in the associated app

Open URL:Citrix Receiver

Cancel

The Citrix application will take a minute to load.

You might also get a Legal Notice of System Usage; click Ok to close.
Application will start shortly after



5. Meditech will then auto-log you in

